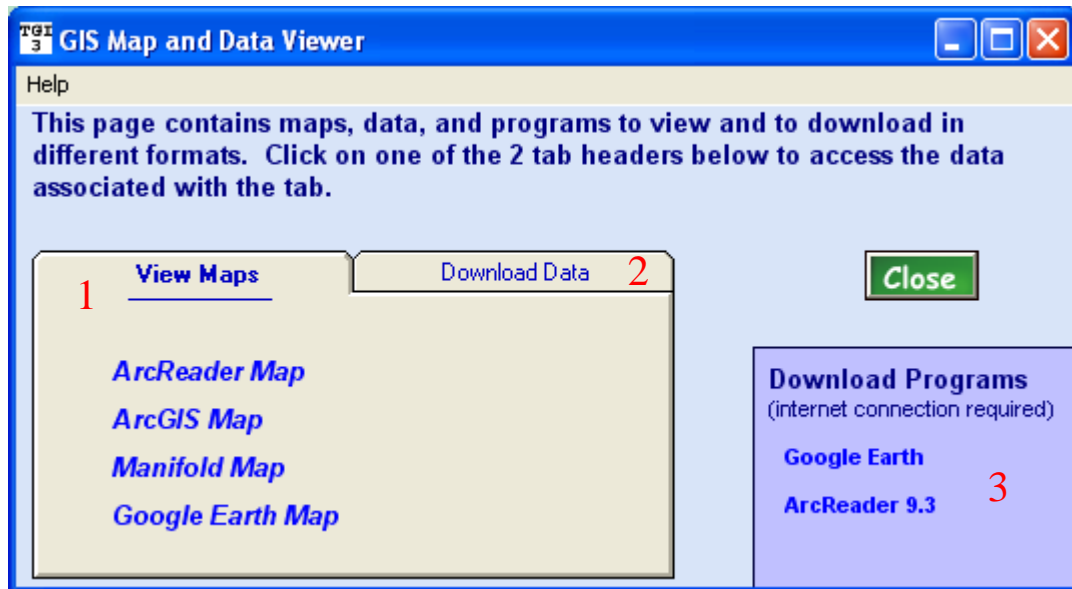


GIS Data Viewer Help File

This program allows the user to look at maps and download the GIS data onto the user's computer. There are 3 parts to this form:



- 1) View GIS maps
- 2) Download GIS and tabular data
- 3) Download GIS viewing software

1) View GIS maps

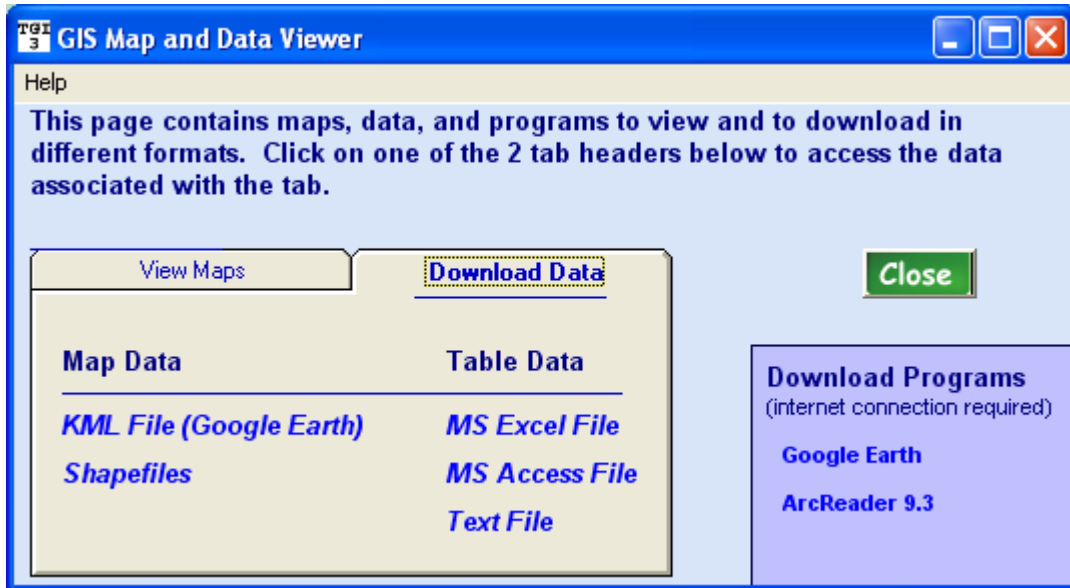
The GIS maps are saved in 4 different formats. The program lets the user know which programs the user has installed by changing the font colour to blue. If the font colour is grey, it means the software needed to open the map is not installed on the computer.

2) Download GIS data

The geology data used to create these maps can be downloaded onto the user's computer by selecting one of the options in the download data section. There are 5 options:

- KML File - Google Earth file format
- Shapefile - Standard file format will work on most GIS software (includes bitmaps)
- MS Excel File – Ages saved as a MS Excel spreadsheet
- MS Access File – Ages saved as a MS Access database
- Text File – Ages saved as a comma delimited text file

Please click one of these file formats, and a dialogue box will ask the user to name the file and where to put it. The shapefiles are stored as a ZIP file so the data needs to be unzipped before using.



3) Download GIS software

If there is no GIS software installed on the computer, you have the option to download ArcReader and Google Earth for free. An internet connection is needed to download these softwares.